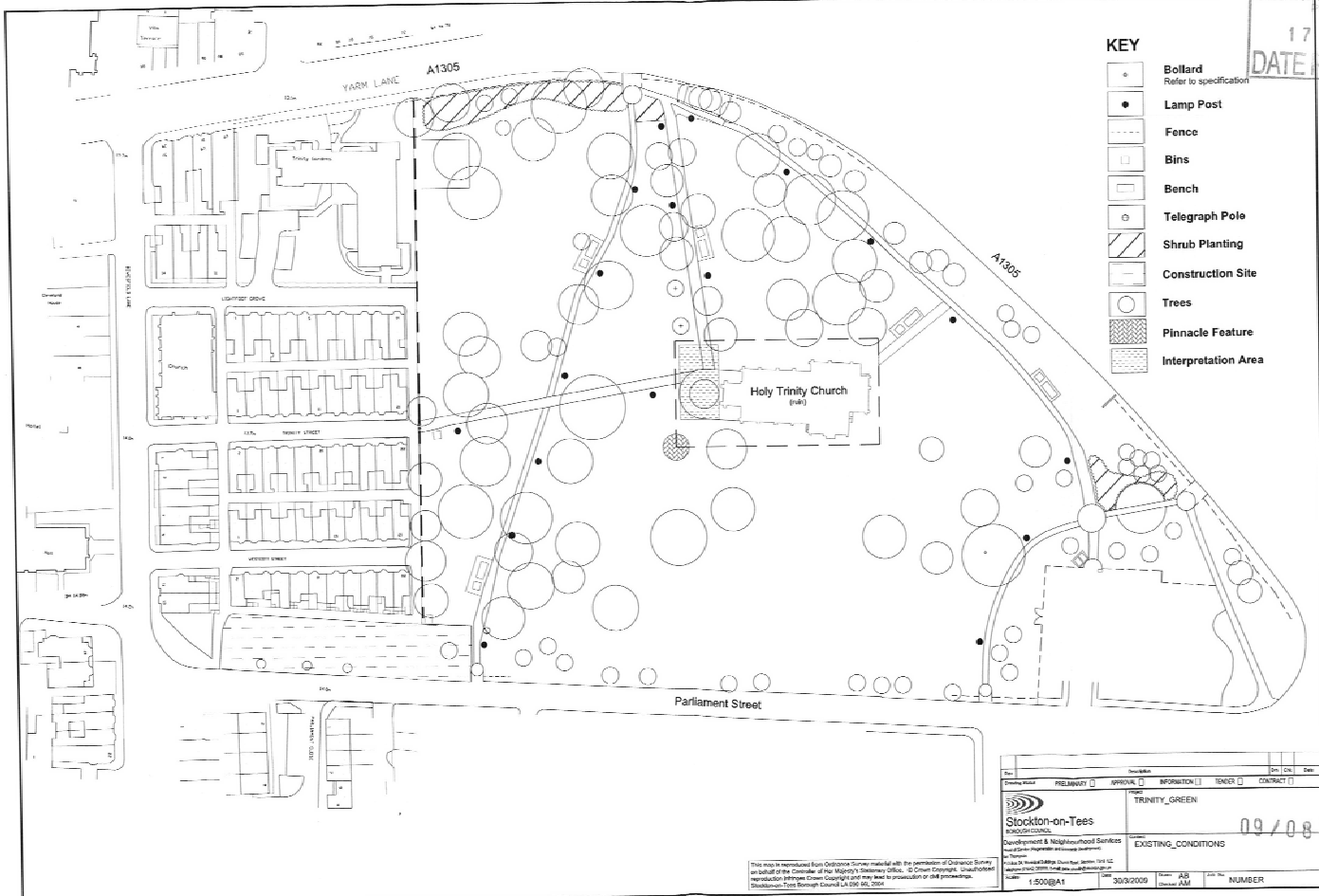


STOCKTON-ON-TEES BOROUGH COUNCIL
 17 APR 2009
 DATE RECEIVED



- KEY**
- Bollard
Refer to specification
 - Lamp Post
 - Fence
 - Bins
 - Bench
 - Telegraph Pole
 - Shrub Planting
 - Construction Site
 - Trees
 - Pinnacle Feature
 - Interpretation Area

This plan is reproduced from Ordnance Survey material with the permission of Ordnance Survey on behalf of the Controller of Her Majesty's Stationery Office. © Crown Copyright. Unauthorised reproduction infringes Crown Copyright and may lead to prosecution or civil proceedings. Stockton-on-Tees Borough Council LA 096 06, 2004

| | |
|--|--|
| Stockton-on-Tees Borough Council Development & Neighbourhood Services 100 Victoria Road Stockton-on-Tees, Cleveland, TS16 5LZ Telephone: 01642 529911 Fax: 01642 529912 Email: enquiries@stockton.gov.uk | TRINITY_GREEN 09/08/08 EXISTING CONDITIONS |
| 15008A1 30/08/2008 AS AM | NUMBER |

SBC 0002